

# Declaration of compliance (EC No. 10/2011)

For materials intended to come into contact with food

Company name: **Mid Ocean Brands BV**  
 Postal address: **Wellensiekstraat 2**  
 Postcode and City: **6718 XZ Ede (NL)**  
 Telephone number: **0031 (0)342 426992**  
 E-mail address: **DOC@reclamond.com**



midocean

**Producer:** Not public for customers

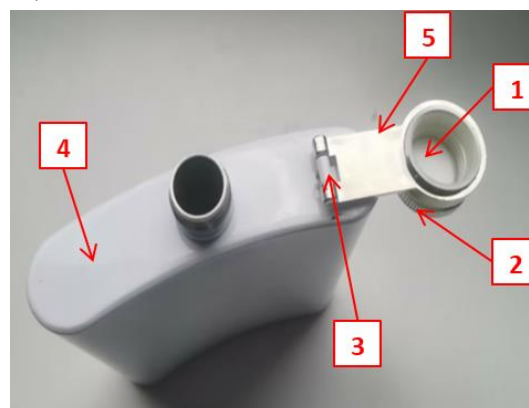
We declare that DOC issued under our sole responsibility and belongs to the following product:

<b>Apparatus model/Product</b>	MO2073-06
<b>Type</b>	Slim hip flask in recycled stainless steel (90% recycled stainless and 10% stainless steel) with sublimation layer. Single wall. Capacity: 190 ml.
<b>Batch</b>	PO 41-112028
<b>Country of origin</b>	China

**Object of the declaration** (identification of food contact product allowing traceability; it may include a colour image of sufficient clarity where necessary for the identification of the product):



**MOB /MO2073**  
**PO BOX 644**  
**6710 BP (NL)**  
**PO 41-112028**  
**Made in China**



1, 2, 4: direct food contact

The following substances subject to restrictions and/or specification are used in the above-mentioned product. The materials and raw materials used comply with Regulation (EU) No 10/2011.

Part	Chemical Name	CAS	EC	Percent
4	Stainless Steel 304			88.00%
	- Carbon 0.08%	7440-44-0	231-153-3	
	- Silicone 0.75%	7440-21-3	231-130-8	
	- Manganese 2%	7439-96-5	231-105-1	
	- Phosphorus 0.045%	7723-14-0	231-768-7	
	- Sulfur 0.03%	7704-34-9	231-722-6	
	- Nickel 8%	7440-02-0	231-111-4	
	- Chromium 18%	7440-47-3	231-157-5	
	- Iron 71.095%	7439-89-6	231-096-4	
2	Acrylonitrile Butadiene Styrene (ABS)	97048-04-9	619-253-9	7.40%
3	Iron	7439-89-6	231-096-4	2.50%
5	Nickel	7440-02-0	231-111-4	2.00%
1	Polyethylene Terephthalate (PET)	25038-59-9	607-507-1	0.10%

The following substances and materials are intended to come into contact with food.

# Declaration of compliance (EC No. 10/2011)

## For materials intended to come into contact with food



Part	Chemical Name	CAS	EC
1	Polyethylene Terephthalate (PET)	25038-59-9	607-507-1
2	Acrylonitrile Butadiene Styrene (ABS)	97048-04-9	619-253-9
4	Stainless Steel 304		
	- Carbon 0.08%	7440-44-0	231-153-3
	- Silicone 0.75%	7440-21-3	231-130-8
	- Manganese 2%	7439-96-5	231-105-1
	- Phosphorus 0.045%	7723-14-0	231-768-7
	- Sulfur 0.03%	7704-34-9	231-722-6
	- Nickel 8%	7440-02-0	231-111-4
	- Chromium 18%	7440-47-3	231-157-5
	- Iron 71.095%	7439-89-6	231-096-4

## COMPLIANCE

**The manufacturer declares that the mentioned product complies with all relevant provisions of**

Regulation (EC) No 1935/2004 - Materials and articles intended to come into contact with food\*  
 Regulation (EC) No 10/2011 - Plastic materials and articles intended to come into contact with food\*  
 Regulation (EC) No 2023/2006 - GMP for materials and articles intended to come into contact with food\*  
 \* Inclusive subsequent amendments

**In conjunction with following harmonized standards**

IEC 62321-5:2014; EN 14372:2004.

**Conditions of use:**

- Type(s) of food intended to come into contact with the material:

**Suitable for alcoholic beverage.**

- Time and temperature and storage while in contact with food:

**Time: 24hours.;**

**Temperature: 40°C**

- Ratio of food contact surface area to volume used:

**15 dm<sup>2</sup>/l**

**Substances, which are subject to “DUAL-USE” additives in materials or “PURITY CRITERIA”.**

- No dual use additives were used in the manufacture of this product.  
 - There are no substances subject to purity criteria.

**Information about the compliance of substances used are subject to any restriction or specification**

- This product is in compliance with overall and Specific Migration Limits (SML's) standard testing conditions laid down in regulation (EC) 10/2011. Additional information including test reports can be provided on request.

**Functional barrier**

- There is no function barrier present.

**Signed for and on behalf of:**

Ede (NL)

01-08-2023

Place of issue

Date of issue

**Ronald Sillessen**  
 General Manager  
 Mid Ocean