

Declaration of compliance (EC No. 10/2011)

For materials intended to come into contact with food

Company name: **Mid Ocean Brands BV**
 Postal address: **Wellensiekstraat 2**
 Postcode and City: **6718 XZ Ede (NL)**
 Telephone number: **0031 (0)342 426992**
 E-mail address: **DOC@reclamond.com**



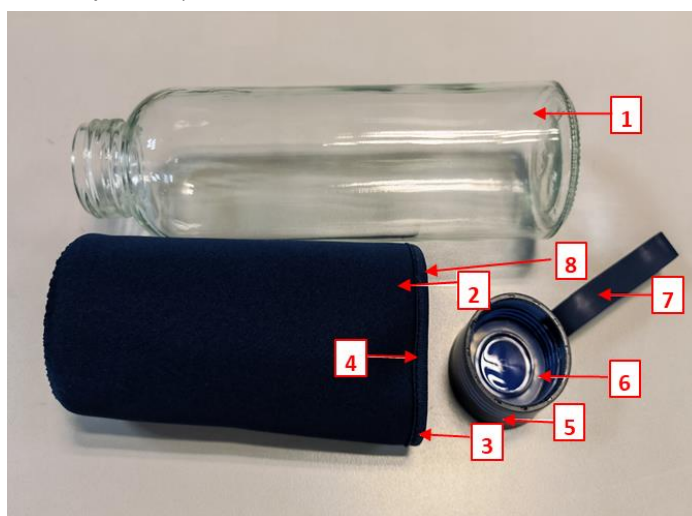
midocean

Producer: Not public for customers

We declare that DOC issued under our sole responsibility and belongs to the following product:

Apparatus model/Product	MO2089-03, -05, -07, -13, -15, -37, -85
Type	Recycled glass bottle with neoprene sleeve and PS lid with silicone hanger. Capacity: 500ml.
Batch	PO 41-112110
Country of origin	China

Object of the declaration (identification of food contact product allowing traceability; it may include a colour image of sufficient clarity where necessary for the identification of the product):



1, 5, 6: direct food contact

The following substances subject to restrictions and/or specification are used in the above-mentioned product. The materials and raw materials used comply with Regulation (EU) No 10/2011.

Part	Chemical Name	CAS	EC	Percent
1	Glass	308066-74-2	920-837-3	67.00%
5	Polypropylene (PP)	9003-07-0	618-352-4	18.00%
7	Silicone	7440-21-3	231-130-8	7.00%
8	Neoprene	9010-98-4	618-463-8	5.00%
2	Polyester (PET)	25037-45-0	607-501-9	2.00%
3	Polyester (PET)	25037-45-0	607-501-9	0.80%
4	Cotton fibers	-	-	0.10%
6	Silicone	7440-21-3	231-130-8	0.10%

Declaration of compliance (EC No. 10/2011)

For materials intended to come into contact with food

The following substances and materials are intended to come into contact with food.

Part	Chemical Name	CAS	EC
1	Glass	308066-74-2	920-837-3
5	Polypropylene (PP)	9003-07-0	618-352-4
6	Silicone	7440-21-3	231-130-8



COMPLIANCE

The manufacturer declares that the mentioned product complies with all relevant provisions of

Regulation (EC) No 1935/2004 - Materials and articles intended to come into contact with food*
 Regulation (EC) No 10/2011 - Plastic materials and articles intended to come into contact with food*
 Regulation (EC) No 2023/2006 - GMP for materials and articles intended to come into contact with food*
 * Inclusive subsequent amendments

In conjunction with following harmonized standards

EN 1186-1:2002; EN 1186-3:2002; EN 13130-1:2004; IEC 62321-5:2014; EN ISO 14362-1:2017; EN ISO 14362-3:2017; EN 14372:2004; EN 1388-1:1995.

Conditions of use:

- Type(s) of food intended to come into contact with the material:

Suitable for water, tea, fruit juice, coffee.

- Time and temperature and storage while in contact with food:

Time: 2hours;

Temperature: 70°C

- Ratio of food contact surface area to volume used:

8 dm²/l

Substances, which are subject to "DUAL-USE" additives in materials or "PURITY CRITERIA".

- No dual use additives were used in the manufacture of this product.
 - There are no substances subject to purity criteria.

Information about the compliance of substances used are subject to any restriction or specification

- This product is in compliance with overall and Specific Migration Limits (SML's) standard testing conditions laid down in regulation (EC) 10/2011. Additional information including test reports can be provided on request.

Functional barrier

- There is no function barrier present.

Signed for and on behalf of:

Ede (NL)

01-08-2023

Place of issue

Date of issue

Ronald Sillessen
 General Manager
 Mid Ocean