

Declaration of compliance (EC No. 10/2011)

For materials intended to come into contact with food

Company name: **Mid Ocean Brands BV**
 Postal address: **Wellensiekstraat 2**
 Postcode and City: **6718 XZ Ede (NL)**
 Telephone number: **0031 (0)342 426992**
 E-mail address: **DOC@reclamond.com**



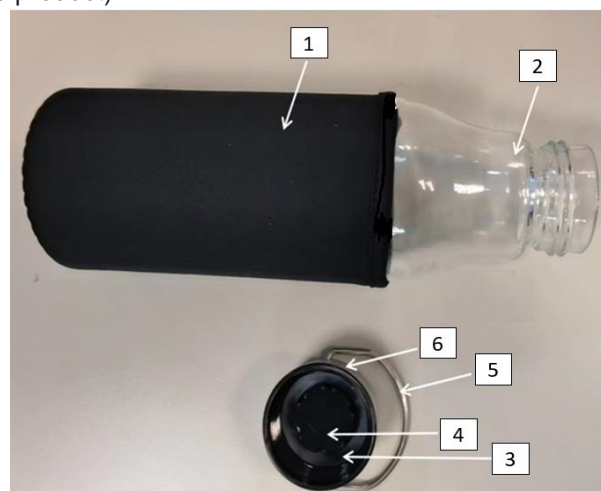
midocean

Producer: Not public for customers

We declare that DOC issued under our sole responsibility and belongs to the following product:

Apparatus model/Product	MO6861
Type	Glass bottle with SS lid with handle. Capacity : 500 ml
Batch	PO 41-112016
Country of origin	China

Object of the declaration (identification of food contact product allowing traceability; it may include a colour image of sufficient clarity where necessary for the identification of the product):



2, 3, 4: direct food contact

The following substances subject to restrictions and/or specification are used in the above-mentioned product. The materials and raw materials used comply with Regulation (EU) No 10/2011.

Part	Chemical Name	CAS	EC	Percent
2	Glass	308066-74-2	920-837-3	82.00%
1	Polyester (PET) 50%	25037-45-0	607-501-9	7.90%
	Neoprene 50%	9010-98-4	618-463-8	
6	Stainless Steel 201			5.81%
	- Carbon 0.15%	7440-44-0	231-153-3	
	- Silicone 0.75%	7440-21-3	231-130-8	
	- Manganese 5.5%	7439-96-5	231-105-1	
	- Phosphorus 0.06%	7723-14-0	231-768-7	
	- Sulfur 0.03%	7704-34-9	231-722-6	
	- Nickel 3.5%	7440-02-0	231-111-4	
5	Stainless Steel 201			2.19%
	- Carbon 0.15%	7440-44-0	231-153-3	
	- Silicone 0.75%	7440-21-3	231-130-8	
	- Phosphorus 0.06%	7723-14-0	231-768-7	

Declaration of compliance (EC No. 10/2011)

For materials intended to come into contact with food

	- Sulfur 0.03%	7704-34-9	231-722-6	
	- Nickel 3.5%	7440-02-0	231-111-4	
	- Chromium 16%	7440-47-3	231-157-5	
	- Iron 74.01%	7439-89-6	231-096-4	
4	Polypropylene (PP)	9003-07-0	618-352-4	2.00%
3	Silicone	7440-21-3	231-130-8	0.10%

The following substances and materials are intended to come into contact with food.

Part	Chemical Name	CAS	EC
2	Glass	308066-74-2	920-837-3
3	Silicone	7440-21-3	231-130-8
4	Polypropylene (PP)	9003-07-0	618-352-4



COMPLIANCE

The manufacturer declares that the mentioned product complies with all relevant provisions of

Regulation (EC) No 1935/2004 - Materials and articles intended to come into contact with food*

Regulation (EC) No 10/2011 - Plastic materials and articles intended to come into contact with food*

Regulation (EC) No 2023/2006 - GMP for materials and articles intended to come into contact with food*

* Inclusive subsequent amendments

In conjunction with following harmonized standards

EN 1186-1:2002; EN 1186-3:2002; EN 13130-1:2004; IEC 62321-5:2014; EN ISO 14362-1:2017; EN ISO 14362-3:2017; EN 14372:2004; EN 1388-1:1995.

Conditions of use:

- Type(s) of food intended to come into contact with the material:

Suitable for water, tea, fruit juice, coffee

- Time and temperature and storage while in contact with food:

Time: 2hours;

Temperature: 70°C

- Ratio of food contact surface area to volume used:

9 dm²/l

Substances, which are subject to "DUAL-USE" additives in materials or "PURITY CRITERIA".

- No dual use additives were used in the manufacture of this product.

- There are no substances subject to purity criteria.

Information about the compliance of substances used are subject to any restriction or specification

- This product is in compliance with overall and Specific Migration Limits (SML's) standard testing conditions laid down in regulation (EC) 10/2011. Additional information including test reports can be provided on request.

Functional barrier

- There is no function barrier present.

Signed for and on behalf of:

Ede (NL)

01-08-2023

Place of issue

Date of issue

Ronald Sillessen
General Manager
Mid Ocean