

USER MANUAL



Hereby, MOB, declares that item MO2160 is in Compliance with the essential requirements and other relevant conditions of Regulation 2004/1935/EC. The full text of the EU declaration of conformity is available at the following internet address: www.momanual.com.

MOB, PO BOX 644, 6710 BP (NL).



PO: 41-XXXXXX

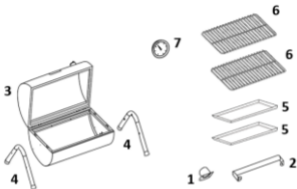
Made in China



MO2160

EN
BBQ grill

Oven Accessories:



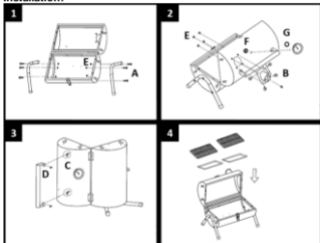
1. Chimney x 1pc
2. Handle x 1pc
3. Furnace x 1pc
4. Leg tubes x 2pcs
5. Charcoal tray x 2pcs
6. Grill net x 2pcs
7. Thermometer x 1pc

Screw List:

A	
B	
C	
D	
E	
F	
G	

- A. 6pcs Screw M6X25
- B. 4pcs Screw M6X8
- C. 2pcs Hand-tightened butterfly nut M5
- D. 2pcs Screw M5X10
- E. 10pcs Nut M6
- F. 1pc Nut M12
- G. 1pc Metal gasket

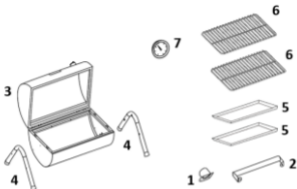
Installation:



1. Install the leg tubes using A (Screw M6X25) and E (Nut M6).
2. Install the thermometer on the furnace using F (Nut M12) and G (Metal gasket). Install the chimney using B (Screw M6X8) and E (Nut M6).
3. Install the handle using D (Screw M5X10) and C (Hand-tightened butterfly nut M5).
4. Put the charcoal tray in the furnace and put the grill net on the top.

DE
BBQ grill

Zubehör:



1. Rauchabzug x 1 St.
2. Handgriff x 1 St.
3. Ofen x 1 St.
4. Standbeine x 2 St.
5. Holzkohlenschale x 2 St.
6. Grillrost x 2 St.
7. Thermometer x 1 St.

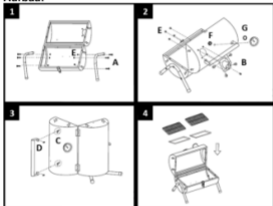
Übersicht Schrauben:

A	
B	
C	
D	
E	
F	
G	

- A. 6 St. Schrauben M6X25

- B. 4 St. Schrauben M6X8
- C. 2 St. Flügelmuttern M5
- D. 2 St. Schrauben M5X10
- E. 10 St. Mutter M6
- F. 1 St. Mutter M12
- G. 1 Stück Metalldichtung

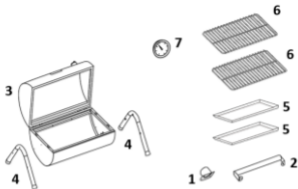
Aufbau:



1. Montieren Sie die Standbeine mit A (Schraube M6X25) und E (Mutter M6).
2. Montieren Sie das Thermometer mit Hilfe von F (Mutter M12) und G (Metalldichtung) am Ofen. Befestigen Sie den Rauchabzug mit B (Schraube M6X8) und E (Mutter M6).
3. Montieren Sie den Griff mit D (Schraube M5X10) und C (Flügelmutter M5).
4. Platzieren Sie die Holzkohlenschale in den Ofen und legen Sie das Grillgitter darauf.

FR
Grill BBQ

Accessoires du four :



1. Cheminée x 1pc
2. Poignée x 1pc
3. Four x 1pc
4. Pieds du four x 2pcs
5. Plateau à charbon x 2pcs
6. Grill x 2pcs
7. Thermomètre x 1pc

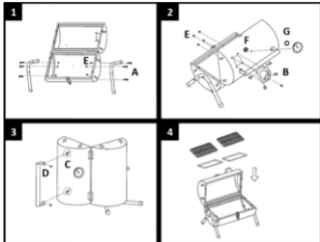
Liste des vis :

A	
B	
C	
D	
E	
F	
G	

- A. 6 vis M6X25
- B. 4 vis M6X8
- C. 2 écrous papillon à serrer à la main M5
- D. 2 vis M5X10

- E. 10 écrous M6
- F. 1 écrou M12
- G. 1 joint métallique

Installation :

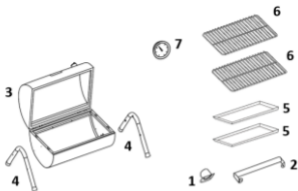


1. Installez les pieds du four en utilisant A (vis M6X25) et E (écrou M6).
2. Installez le thermomètre sur le four en utilisant F (écrou M12) et G (joint métallique). Installez la cheminée à l'aide de B (vis M6X8) et E (écrou M6).
3. Installez la poignée à l'aide de D (vis M5X10) et C (écrou papillon M5 à serrer à la main).
4. Mettez le plateau à charbon dans le four et placez le filet de grill sur le dessus.

ES

Parrilla barbacoa

Accesorios del horno:



1. 1 chimenea
2. 1 asa
3. 1 horno
4. 2 patas
5. 2 bandejas para carbón
6. 2 parrillas
7. 1 termómetro

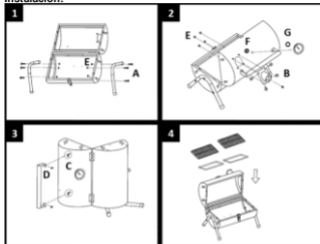
Lista de tornillos:

A	
B	
C	
D	
E	
F	
G	

- A. Tornillo M6x25 (6 uds.)
- B. Tornillo M6x8 (4 uds.)
- C. Tuerca de mariposa de ajuste manual M5 (2 uds.)
- D. Tornillo M5x10 (2 uds.)
- E. Tuerca M6 (10 uds.)

- F. Tuerca M12 (1 ud.)
- G. Junta metálica (1 ud.)

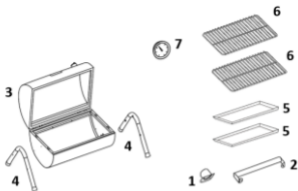
Instalación:



1. Instale las patas utilizando A (tornillo M6x25) y E (tuerca M6).
2. Instale el termómetro en el homo utilizando F (tuerca M12) y G (junta metálica). Instale la chimenea utilizando B (tornillo M6x8) y E (tuerca M6).
3. Instale el asa utilizando D (tornillo M5X10) y C (tuerca de mariposa de ajuste manual M5).
4. Coloque la bandeja de carbón en el homo y ponga la parrilla encima.








IT Griglia BBQ

Accessori:



1. Camino x 1 pz
2. Maniglia x 1 pz
3. Forno x 1 pz
4. Tubi per le gambe x 2 pezzi
5. Vassoio per carbone x 2 pezzi
6. Rete per griglia x 2 pezzi
7. Termometro x 1 pz

Lista viti:

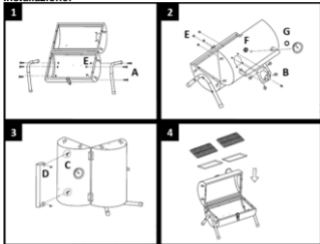
A	
B	
C	
D	
E	
F	
G	

- A. 6 viti M6X25
- B. 4 viti M6X8
- C. 2 dadi a farfalla serrati a mano M5
- D. 2 viti M5X10
- E. 10 dadi M6

F. 1 dado M12

G. 1 guarnizione in metallo

Installazione:

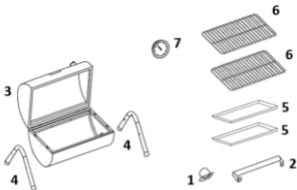


1. Installare i tubi delle basi utilizzando A (vite M6X25) ed E (dado M6).
2. Installare il termometro sul fomo utilizzando F (dado M12) e G (guarnizione metallica). Installare il camino utilizzando B (vite M6X8) ed E (dado M6).
3. Installare la maniglia utilizzando D (vite M5X10) e C (dado a farfalla M5 serrato a mano).
4. Metti il vassoio del carbone nel fomo e metti la rete della griglia sopra.

NL

BBQ-grill

Ovenaccessoires:



1. Schoorsteen x 1pc
2. Handvat x 1pc
3. Oven x 1pc
4. Beenbuizen x 2st
5. Houtskool lade x 2st
6. Grillnet x 2st
7. Thermometer x 1pc

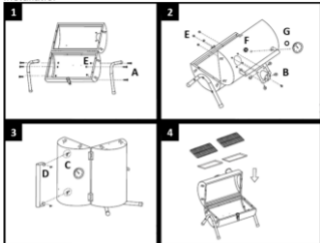
Schroevenlijst:

A	
B	
C	
D	
E	
F	
G	

- A. 6st Schroef M6X25
- B. 4st Schroef M6X8
- C. 2st Handvastgezette vleugelmoer M5
- D. 2st Schroef M5X10
- E. 10st Moer M6
- F. 1pc Moer M12

G. 1pc Metalen pakking

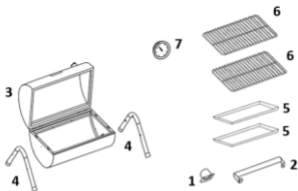
Installatie:



1. Installeer de beenbuizen met A (Schroef M6X25) en E (Moer M6).
2. Installeer de thermometer op de oven met F (Moer M12) en G (Metalen pakking). Installeer de schoorsteen met B (schroef M6X8) en E (moer M6).
3. Installeer de handgreep met D (Schroef M5X10) en C (Handgedraaide vleugelmoer M5).
4. Plaats de houtskoollade in de oven en leg het grillnet erop.








PL Grill

Akcesoria:



1. Komin x 1 szt.
2. Uchwyt x 1 szt.
3. Piec x 1 szt.
4. Rurki na nogi x 2szt.
5. Taca na węgiel drzewny x 2szt.
6. Siatka do grilla x 2 szt.
7. Termometr x 1szt.

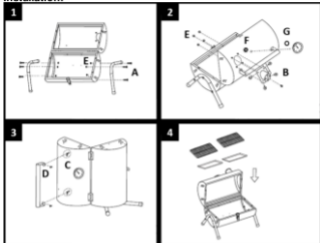
Screw List:

A	
B	
C	
D	
E	
F	
G	

- A. 6szt śruby M6X25
- B. 4 śruby M6X8
- C. 2szt Ręcznie dokręcana nakrętka motylkowa M5
- D. 2szt śruby M5X10
- E. 10szt Nakrętka M6

- F. 1szt. nakrętka M12
- G. 1 szt. metalowej uszczelki

Installation:



1. Zamontować rurki nóg za pomocą A (śruba M6X25) i E (nakrętka M6).
2. Zamontować termometr na piecu za pomocą F (nakrętka M12) i G (metalowa uszczelka). Zainstaluj komin używając B (Śruba M6X8) i E (Nakrętka M6).
3. Zamontować uchwyt za pomocą D (Śruba M5X10) i C (Ręcznie dokręcana nakrętka motylkowa M5).
4. Umieść tacę na węgiel drzewny w palenisku i połóż siatkę do grillowania na górze.